

# Underfloor Trunking





## Ducting and Accessories

**Material:** Heavy gauge high impact uPVC

**Standard length:** 2.9 metres

**Height:** 25mm



### uPVC Underfloor Trunking

Product Code	Description
UFD 225 W	25 H x 50 W x 2.5 T
UFD 325 W	25 H x 75 W x 2.5 T
UFD 332 W	25 H x 75 W x 3.2 T
UFD 427 W	25 H x 100 W x 2.7 T
UFD 432 W	25 H x 100 W x 3.2 T

## Vertical Access

The vertical access box helps to facilitate easy accessibility from floor ducts to wall ducts. This is for connections to distribution boards or other floors.



### Underfloor Vertical Access Box

#### 25mm Depth (L-Shape)

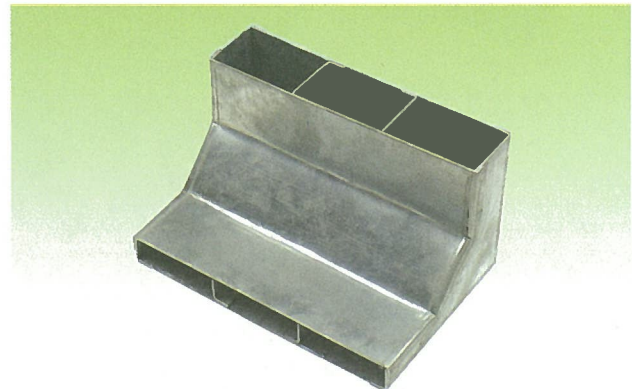
Product Code	Description
UL-LVB 250/2	25 to 50 H x 250 W 2 Compartments
UL-LVB 250/3	25 to 50 H x 250 W 3 Compartments
UL-LVB 300/2	25 to 50 H x 300 W 2 Compartments
UL-LVB 300/2	25 to 50 H x 300 W 3 Compartments

#### 32mm Depth (L-Shape)

Product Code	Description
UL-MVB 250/2	32 to 50 H x 250 W 2 Compartments
UL-MVB 250/3	32 to 50 H x 250 W 3 Compartments
UL-MVB 300/2	32 to 50 H x 300 W 2 Compartments
UL-MVB 300/2	32 to 50 H x 300 W 3 Compartments

#### 38mm Depth (L-Shape)

Product Code	Description
UL-HVB 250/2	38 to 50 H x 250 W 2 Compartments
UL-HVB 250/3	38 to 50 H x 250 W 3 Compartments
UL-HVB 300/2	38 to 50 H x 300 W 2 Compartments
UL-HVB 300/2	38 to 50 H x 300 W 3 Compartments



### Underfloor Vertical Access Box

#### 25mm Depth (Slanting)

Product Code	Description
UL-LVBs 250/2	25 to 50 H x 250 W 2 Compartments
UL-LVBs 250/3	25 to 50 H x 250 W 3 Compartments
UL-LVBs 300/2	25 to 50 H x 300 W 2 Compartments
UL-LVBs 300/2	25 to 50 H x 300 W 3 Compartments

#### 32mm Depth (Slanting)

Product Code	Description
UL-MVBs 250/2	32 to 50 H x 250 W 2 Compartments
UL-MVBs 250/3	32 to 50 H x 250 W 3 Compartments
UL-MVBs 300/2	32 to 50 H x 300 W 2 Compartments
UL-MVBs 300/2	32 to 50 H x 300 W 3 Compartments

#### 32mm Depth (Slanting)

Product Code	Description
UL-HVBs 250/2	38 to 50 H x 250 W 2 Compartments
UL-HVBs 250/3	38 to 50 H x 250 W 3 Compartments
UL-HVBs 300/2	38 to 50 H x 300 W 2 Compartments
UL-HVBs 300/2	38 to 50 H x 300 W 3 Compartments

# TRUNKING

## Metal Trunking

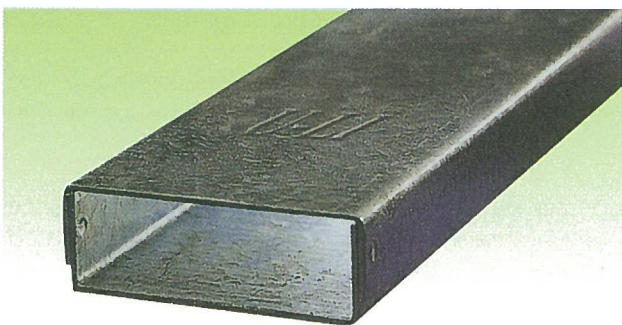
**Material:** Galvanised sheet steel to BS2989, in compliance to JIS G3131 or JIS G3193

**Standard thickness:** 1.6mm

**Standard lengths:** 2.44 metres or 3.0 metres single, two or triple compartments

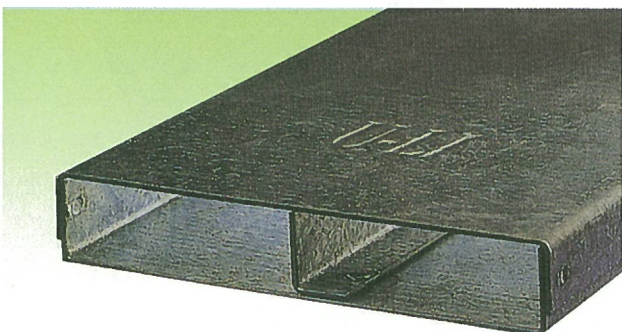
**Standard depths:** 25mm, 32mm and 38mm

Cut to length can be arranged and is subject to price confirmation and availability



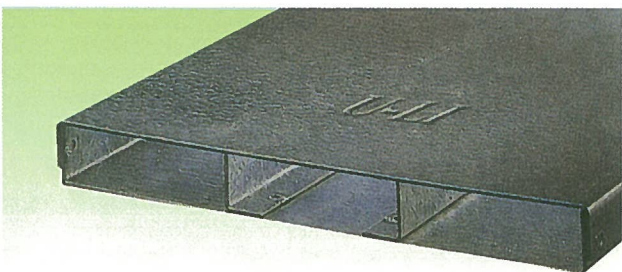
### UL-UFL

List No.	Description
UL-UFL 50/1/6	50 x 25 x 1.6mm 1 Compartment
UL-UFL 75/1/6	75 x 25 x 1.6mm 1 Compartment
UL-UFL 100/1/6	100 x 25 x 1.6mm 1 Compartment
UL-UFL 150/2/6	100 x 25 x 1.6mm 2 Compartments
UL-UFL 150/3/6	150 x 25 x 1.6mm 3 Compartments
UL-UFL 200/2/6	200 x 25 x 1.6mm 2 Compartments
UL-UFL 225/3/6	225 x 25 x 1.6mm 3 Compartments
UL-UFL 250/3/6	250 x 25 x 1.6mm 3 Compartments
UL-UFL 275/3/6	275 x 25 x 1.6mm 3 Compartments
UL-UFL 300/3/6	300 x 25 x 1.6mm 3 Compartments



### UL-UFM

List No.	Description
UL-UFM 50/1/6	50 x 32 x 1.6mm 1 Compartment
UL-UFM 75/1/6	75 x 32 x 1.6mm 1 Compartment
UL-UFM 100/1/6	100 x 32 x 1.6mm 1 Compartment
UL-UFM 150/2/6	100 x 32 x 1.6mm 2 Compartments
UL-UFM 150/3/6	150 x 32 x 1.6mm 3 Compartments
UL-UFM 200/2/6	200 x 32 x 1.6mm 2 Compartments
UL-UFM 225/3/6	225 x 32 x 1.6mm 3 Compartments
UL-UFM 250/3/6	250 x 32 x 1.6mm 3 Compartments
UL-UFM 275/3/6	275 x 32 x 1.6mm 3 Compartments
UL-UFM 300/3/6	300 x 32 x 1.6mm 3 Compartments



### UL-UFH

List No.	Description
UL-UFH 50/1/6	50 x 38 x 1.6mm 1 Compartment
UL-UFH 75/1/6	75 x 38 x 1.6mm 1 Compartment
UL-UFH 100/1/6	100 x 38 x 1.6mm 1 Compartment
UL-UFH 150/2/6	100 x 38 x 1.6mm 2 Compartments
UL-UFH 150/3/6	150 x 38 x 1.6mm 3 Compartments
UL-UFH 200/2/6	200 x 38 x 1.6mm 2 Compartments
UL-UFH 225/3/6	225 x 38 x 1.6mm 3 Compartments
UL-UFH 250/3/6	250 x 38 x 1.6mm 3 Compartments
UL-UFH 275/3/6	275 x 38 x 1.6mm 3 Compartments
UL-UFH 300/3/6	300 x 38 x 1.6mm 3 Compartments

Underfloor Trunking is designed to be positioned on a concrete slab and completely covered by the floor screed.



## Junction Box

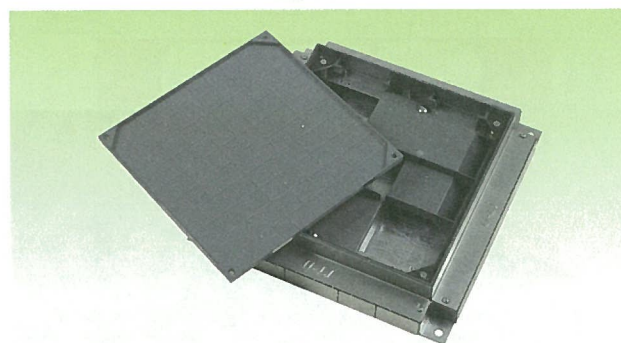
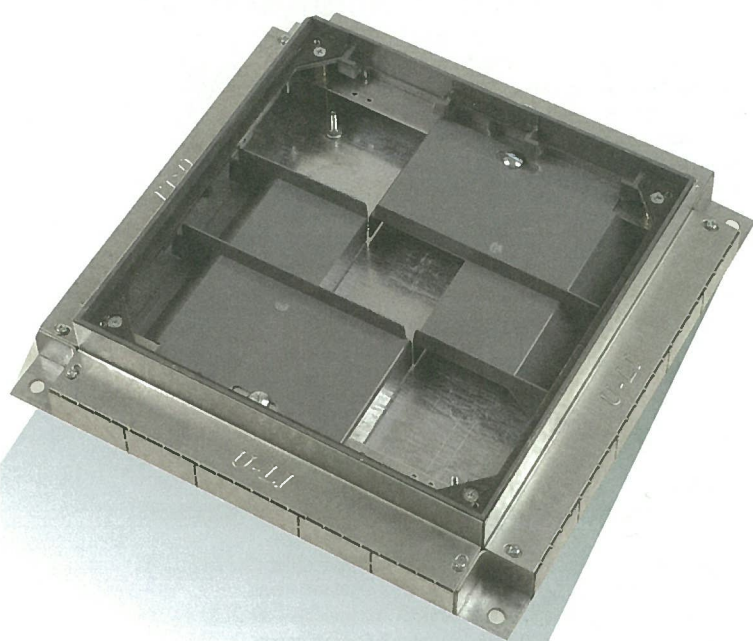
U-LI junction boxes are specially designed to facilitate cabling management in high rise buildings. U-LI junction boxes consists of three main features:

- **Box base frame**
- **Flyover bridge**
- **Trap and frame**

The box frame is made of high pressure die-cast zinc alloy, a non-ferrous and rust-proof material.

The flyover bridge can be fabricated from ABS plastic or electro-galvanised steel with powder coating to give it a good finishing. The flyover bridge which is used to segregate all the service cables can be supplied in two or three compartments.

The trap and frame are made of high pressure die-cast zinc alloy and is powder coated to further enhance the rust resistance and good appearance. The trap and frame are secured by countersunk nickel plated screws recessed 6mm and 9mm to enable it to accept carpet or vinyl tile finishing.



### Junction Box For

#### Max. 25mm Depth Ductings

Product Code	Description
UL-UFBBL 250/2	250 x 250 x 56 - 72mm 2 Compartments
UL-UFBBL 250/3	250 x 250 x 56 - 72mm 3 Compartments
UL-UFBBL 300/2	300 x 300 x 56 - 72mm 2 Compartments
UL-UFBBL 300/3	300 x 300 x 56 - 72mm 3 Compartments
UL-UFBBL 325/3	325 x 325 x 56 - 72mm 3 Compartments
UL-UFBBL 375/3	375 x 375 x 56 - 72mm 3 Compartments
UL-UFBBL 425/3	425 x 425 x 56 - 72mm 3 Compartments

#### Max. 32mm Depth Ductings

Product Code	Description
UL-UJBM 250/2	250 x 250 x 75 - 90mm 2 Compartments
UL-UJBM 250/3	250 x 250 x 75 - 90mm 3 Compartments
UL-UJBM 300/2	300 x 300 x 75 - 90mm 2 Compartments
UL-UJBM 300/3	300 x 300 x 75 - 90mm 3 Compartments
UL-UJBM 325/3	325 x 325 x 75 - 90mm 3 Compartments
UL-UJBM 375/3	375 x 375 x 75 - 90mm 3 Compartments
UL-UJBM 425/3	425 x 425 x 75 - 90mm 3 Compartments

#### Max. 38mm Depth Ductings

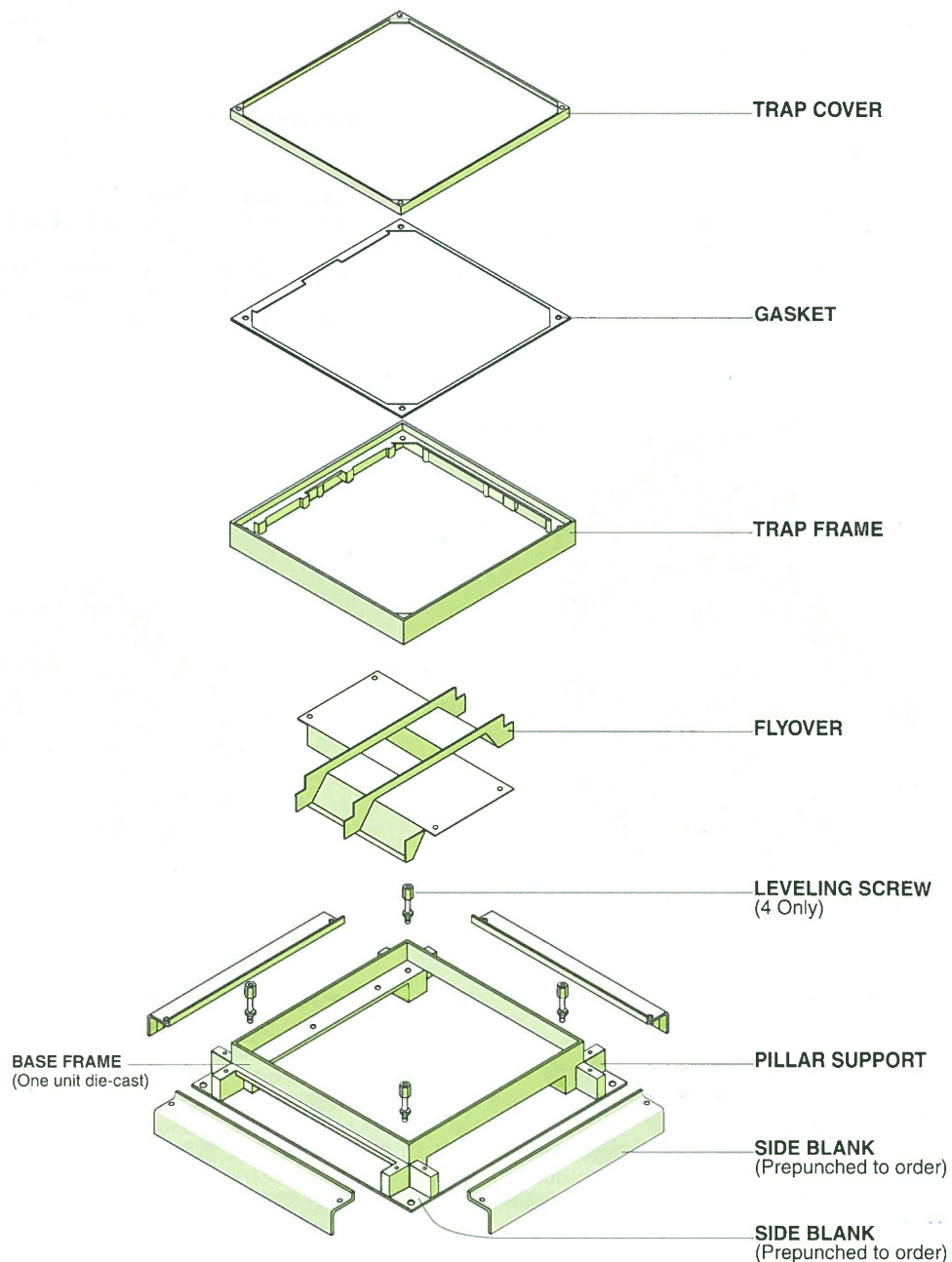
Product Code	Description
UL-UJBH 250/1	250 x 125 x 75 - 95mm 1 Compartment
UL-UJBH 250/2	250 x 250 x 75 - 95mm 2 Compartments
UL-UJBH 250/3	250 x 250 x 75 - 95mm 3 Compartments
UL-UJBH 300/2	300 x 300 x 75 - 95mm 2 Compartments
UL-UJBH 300/3	300 x 300 x 75 - 95mm 3 Compartments
UL-UJBH 325/3	325 x 325 x 75 - 95mm 3 Compartments
UL-UJBH 375/3	375 x 375 x 75 - 95mm 3 Compartments
UL-UJBH 425/3	425 x 425 x 75 - 95mm 3 Compartments

# TRUNKING

## Exploded View

- Adjustable upwards by 15mm
- Overall depth 56mm for 25mm trunking
- Overall depth 75mm for 38mm trunking
- Lid recess 6mm and 9mm for carpet or vinyl can be fitted

The Junction Box comes complete with 4 Conduit Knockout Plates and 4 Trunking Entry Plates. It can be used as a terminal, through, bend, tee, fourway or conduit box. Flyover is also supplied.





## Service Outlet Box

### Overall Depth:

56mm for 25mm trunking

75mm for 32mm/38mm trunking

### Standard Finish:

Epoxy Powder Coated

The Service Box comes with 3 Conduit Knockout Plates and 3 Trunking Entry Plates. It can be used as a through terminal or conduit outlet module.

### Outlet Plates

Must be ordered separately from Service Outlet Module.

### Leveling Screw

Product Code	Description
UL-LS95	leveling adjustable from 110-130
UL-LS60	leveling adjustable from 75-100
UL-LS38	leveling adjustable from 56-75



### Service Outlet Box For

#### Max. 32mm Depth Ductings

Product Code	Description
UL-UFSBM 250/2/1	250 x 250 x 75 - 95mm 2 Compartments 1 Trap
UL-UFSBM 250/3/1	250 x 250 x 75 - 95mm 3 Compartments 1 Trap
UL-UFSBM 300/2/1	300 x 300 x 75 - 95mm 2 Compartments 1 Trap
UL-UFSBM 300/3/1	300 x 300 x 75 - 95mm 3 Compartments 1 Trap
UL-UFSBM 325/3/1	325 x 325 x 75 - 95mm 3 Compartments 1 Trap



### Service Outlet Box For

#### Max. 25mm Depth Ductings

Product Code	Description
UL-UFSBL 250/2/1	250 x 250 x 56 - 72mm 2 Compartments 1 Trap
UL-UFSBL 250/3/1	250 x 250 x 56 - 72mm 3 Compartments 1 Trap
UL-UFSBL 300/2/1	300 x 300 x 56 - 72mm 2 Compartments 1 Trap
UL-UFSBL 300/3/1	300 x 300 x 56 - 72mm 3 Compartments 1 Trap
UL-UFSBL 325/3/1	325 x 325 x 56 - 72mm 3 Compartments 1 Trap



### Service Outlet Box For

#### Max. 38mm Depth Ductings

Product Code	Description
UL-USBH 250/2/1	250 x 250 x 75 - 90mm 2 Compartments 1 Trap
UL-USBH 250/3/1	250 x 250 x 75 - 90mm 3 Compartments 1 Trap
UL-USBH 300/2/1	300 x 300 x 75 - 90mm 2 Compartments 1 Trap
UL-USBH 300/3/1	300 x 300 x 75 - 90mm 3 Compartments 1 Trap
UL-USBH 325/3/1	325 x 325 x 75 - 90mm 3 Compartments 1 Trap



# TRUNKING

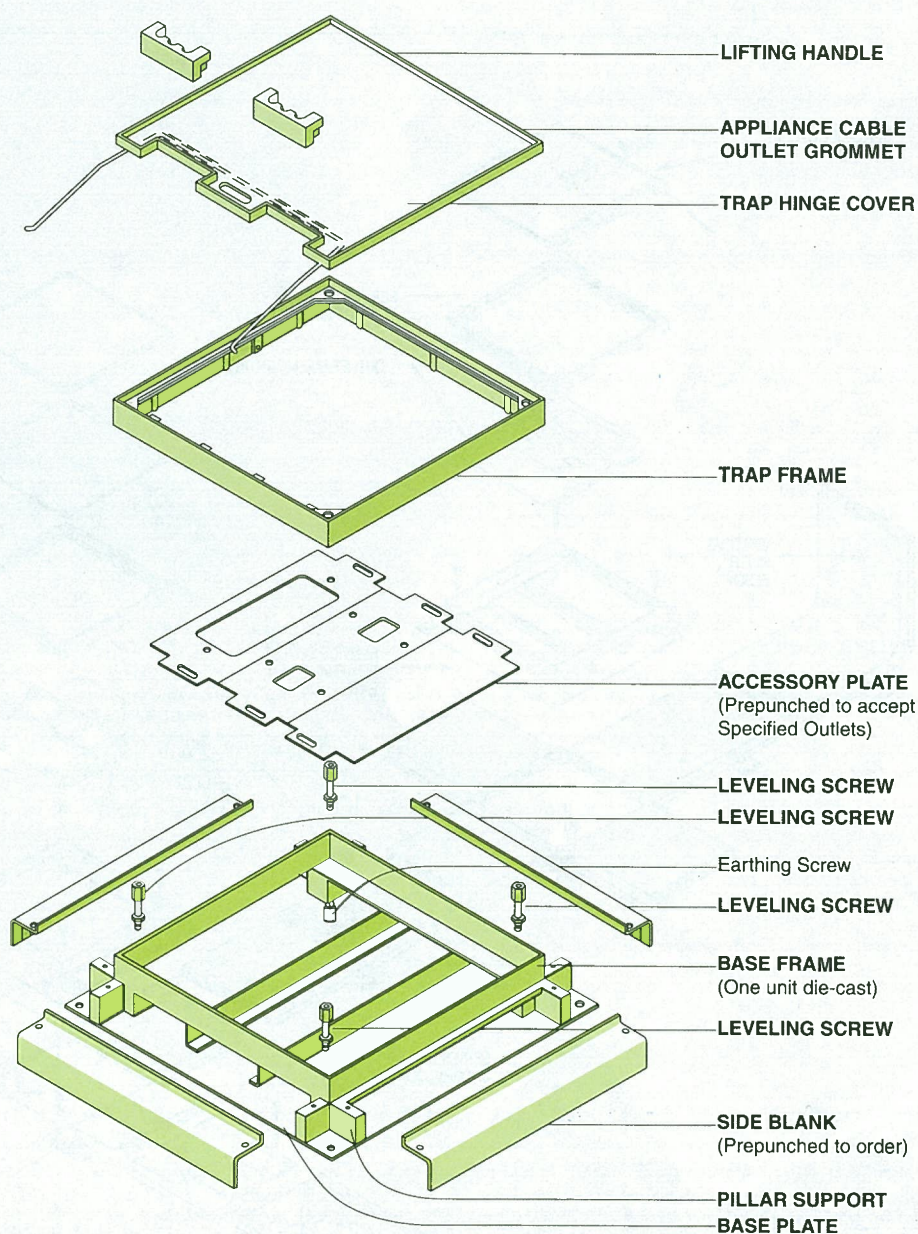
## Service Outlet Box

U-LI Service boxes are specially designed to segregate cables for power, telephone and computer circuits. The service box is provided with a service outlet plate to be mounted to the necessary outlet. The type and amount of sockets can be tailor made to the requirement of customers.

ULI Service boxes consist of three components:

- Box base frame
- Flyover bridge
- Trap and frame

The box base frame, trap and frame, and outlet panel are made of hot dipped galvanised steel sheets which conform to BS 2898. The trap, frame and outlet panel are powder coated to provide a good finish and protection to visible parts. The side plates of the box base are designed to be used for trunking and conduit entries, recessed 6mm and 9mm to enable it to accept carpet or vinyl tile floor finishing.





## Underfloor Trunking System

